



Welcome to the World of
E-Collar Technologies, Inc.

BP-504
Owner's Manual

**“Happiness is a Well
Behaved Dog”**

Welcome to the World of E-Collar Technologies, Inc.



Barkless Pro BP-504

Thank you for purchasing the newly designed Barkless Pro BL-504 bark elimination e-collar. We have incorporated several features making the BP-504 the most humane e-collar to reduce unwanted and excessive barking. The 5 second safety delay feature prevents sensitive dogs from entering a cycle of stimulations from vocalizing from the prior activation. The ability to adjust the sensitivity of the sensor allows the user to tailor the activations to their particular dogs bark.

Our products are designed and produced in compliance with stringent quality methods and standards to assure a safe experience for your dog.

Please feel free to contact us should you have any questions concerning this product and our line of modern remote e-collars. Your complete satisfaction is our only concern.

1-855-326-5527 or sales@ecollar.com

02

TABLE OF CONTENTS

CHARACTERISTICS	3
COMPONENTS	4
GETTING STARTED	5
CHARGING THE COLLAR UNIT	6
TURNING THE UNIT ON/OFF	7
5 PROGRAMMING MODE	8
LCD DISPLAY	9
HOW TO PROGRAM	10
BARK COUNT MODE	11
STIMULATION LEVELS SETTING MODE	12
SENSOR SENSITIVITY MODE	13
PAVLOVIAN TONE ON/OFF MODE	14
TEST MODE	15
HOW TO SELECT THE CORRECT STIMULATION LEVEL	16
INDICATOR LIGHT	17
CORRECTLY FITTING THE COLLAR	18
CONTACT POINTS	19
REPLACEMENT OF CONTACT POINTS	21
ONE YEAR WARRANTY	22

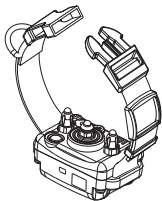
CHARACTERISTICS

- 5 Second Safety Delay Between Stimulation Activations.
- 3 Stimulation Modes: Tone Only, 8 Levels and Auto Mode.
- 3 Levels of Adjustable Bark Sensitivity.
- Ability to Turn Pavlovian Tone Off (Great for tone superstitious dogs).
- LED Light to Indicate Battery Status.
- Employs 2 Hours Quick Charge Li-Po Battery.
- Adaptable to Various Size Dogs and Different Breeds.
- Advanced Vibration Sensor Technology eliminating false activations.
- Fully Waterproof and Shock Resistance.
- Constructed with Antibacterial Plastic.
- Short and Long (Low Nickel) Stainless Steel Contact Points.
- Proprietary ABST (Advanced Bark Suppression Technology).
- Bark Counter
- Sleep Mode (battery conservation)

04

COMPONENTS

- BP-504 Collar Unit with Collar Strap



- Lithium Polymer Charge Adaptor



- Owner's Manual



- Stainless Steel Contact Points



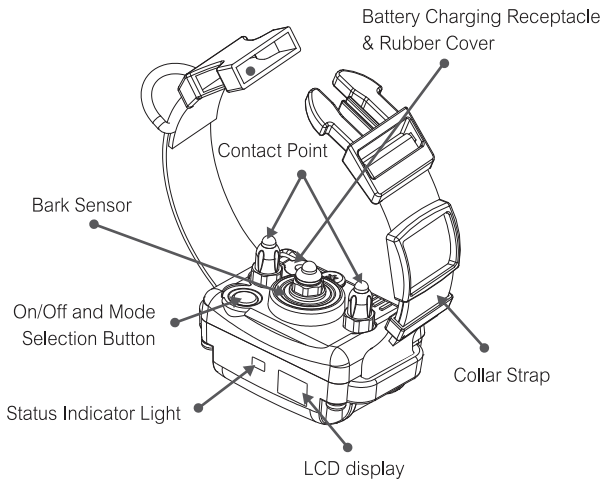
- Contact Point Removal Tool



- Sensor Post for Long Contact Points



GETTING STARTED



The BP-504 is outfitted with a waterproof control button which is used to turn the unit on and off, toggle through the five modes, and change the settings of the different modes.

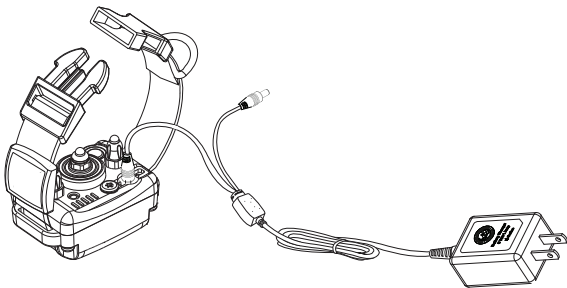
06

CHARGING THE COLLAR UNIT

Indicator Light will blink “Green” under normal operation.

Solid “Red” when Stimulation is Applied to the Dog.

Blinking “Red” when Recharging is Required.



Indicator light will turn solid red during charge cycles and will turn green once it is fully charged. (approximately 2 hours)

Special Note about Battery Care

Collar Receiver is outfitted with Li-Polymer batteries which requires specific care to assure longevity. It is best not to let the battery be fully discharged.

If it does, recharge immediately or irreversible damage may occur.

Keep the collar box away from extreme heat and cold temperatures to prevent battery damage.

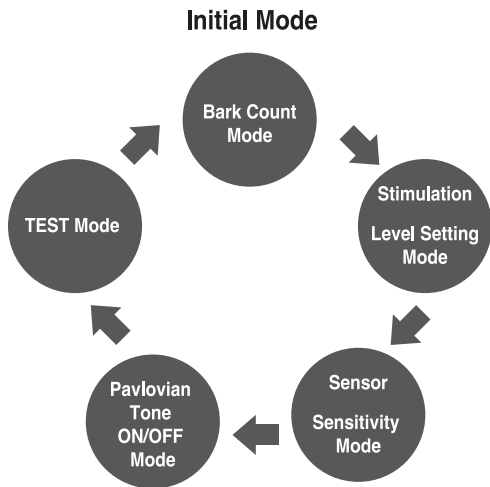
TURNING THE UNIT ON/OFF

To turn on the BP-504 simply press the control button for 0.25 seconds, a tone will sound and the bark count mode will be displayed.

To turn the BP-504 off simply hold the control button for 5 seconds, a tone will sound and the software version will be displayed.

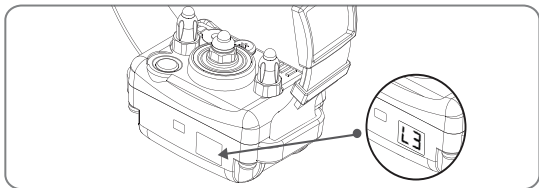
5 PROGRAMMING MODE

The BP-504 features 5 programming modes. The initial mode is the bark counter, pressing the control button will toggle through the modes as shown in the diagram below.



LCD DISPLAY

Mode	LCD Display	Mode
Count Mode	00-99	Number of Bark Activations
Stimulation Level Setting Mode	L 0	Tone Only
	L 1	Stimulation Level 1
	L 2	Stimulation Level 2
	L 3	Stimulation Level 3
	L 4	Stimulation Level 4
	L 5	Stimulation Level 5
	L 6	Stimulation Level 6
	L 7	Stimulation Level 7
	L 8	Stimulation Level 8
	L 9	Auto Mode
Sensor Sensitivity Mode	L	Low Sensitivity
	ΓΠ	Medium Sensitivity
	H	High Sensitivity
Pavlovian	O	Pavlovian Tone On
Tone On/Off	F	Pavlovian Tone Off
Test Mode	¬Γ	Activates test stimulation with current setting value



HOW TO PROGRAM THE BP-504

1. Cycling Through the Different Modes:

- Pressing the control button briefly will cycle through the five modes (Bark Counter, Stimulation Level Setting, Sensor Sensitivity, Pavlovian Tone ON/OFF Setting, and Test Mode).

2. Changing the Mode Settings:

- Display the mode you desire to change and press the control button for 2 seconds until the tone sounds and the display begins to blink.
- Once the unit is in the programming mode simply pressing the control button will cycle the unit through the available settings for that mode.
- To save the setting that is displayed simply press the control button for 2 seconds until the tone sounds and the display stops blinking.
- Inactivity for 10 seconds will also save the mode setting and return the unit to the bark count mode.

3. Normal Operating State:

- When the unit is on and not in programming mode the display will turn off and the battery indicator will continue to flash green or red if it needs to be charged. Pressing the control button will display the bark counter.

BARK COUNTER

The BP-504 defaults to the bark counter mode when turned on or is brought out of sleep mode. It is important to realize the bark counter will not count barks when the 5 second safety delay feature is activated. The bark counter is designed to count the number of stimulation activations not the total number of barks.

To reset the counter simply hold the control button for 2 seconds or until the display resets to zero.

12

STIMULATION MODES

The BarkLess Pro can be set to zero stimulation (L0) with tone on or off. When set to zero and tone is off it will count barks which may be useful in testing the bark sensor. Remember it will wait five seconds after each count before it counts another bark.

Eight different stimulation levels are available to accommodate the varying sizes and temperaments of dogs. The levels are displayed as L1, L2, L3, L4, L5, L6, L7, and L8.

The “Auto Mode” is displayed as L9. In Auto Mode the unit will start at level 1 and increase one level for every 2 activations until it reaches level 8. When the dog stops barking for 10 seconds it will reset to level 1. This mode is useful for users that desire some protection barking but not nuisance barking. It is not recommended for small and/or sensitive dogs as the higher levels can be overwhelming.

SENSOR SENSITIVITY ADJUSTMENT

The BP-504 is outfitted with the ability to adjust the sensitivity of the bark sensor. Most dogs will work fine with the medium setting; however, some dogs with softer or whining barks may need to be set to high “H” to get reliable activations. Larger breeds with very loud barks or when the user wants to allow some softer barking the setting can be changed to the low “L” setting. You the owner are the best judge of what setting best suits your situation.

- To change the sensor sensitivity, press the control button for 2 seconds when the Sensor Sensitivity Mode is displayed.

The LCD display will start blinking and show the current setting.

- Press the control button to change the sensor sensitivity.

Sensor sensitivity will be switched from low, medium, and high in sequence.

- Once the desired setting is displayed, press the control button for 2 seconds to save the desired setting. The LCD display will stop blinking and return to the normal operating mode.

PAVLOVIAN TONE ON/OFF ADJUSTMENT

The BP-504 utilizes a tone prior to the stimulation commonly known as Pavlovian tone; it improves training and allows the dog to prepare for the stimulation making it a more humane experience. Some users may desire the stimulation to be at the instance of the bark and therefore will need to turn off the tone. Also, if your dog experiences “tone superstition” to other tones it may be best to turn it off.

- To change the setting from the defaulted ON position, simply toggle to the “O” and hold the control button for 2 seconds. The LCD display will start blinking and show the current setting of ON “O”.
- Press the control button to toggle to OFF “F”. The Pavlovian tone feature is now off.
- Once the desired setting is displayed, press the control button for 2 seconds to save the desired setting. The LCD display will stop blinking and return to the normal operating mode.

TESTING YOUR BARKLESS COLLAR

The BP-504 has a test mode which allows testing of the stimulation. The sensor can only be tested on a dog using the instructions provided.

- To test the stimulation the unit needs to be in test mode "T". Pressing the control button for 2 seconds activates the stimulation for 3 seconds at the set level of stimulation with LED blinking red after one second of buzzing sound.
- To test the bark sensor the unit should be set to zero stimulation "L0" and the tone should be turned off "F". Put the unit on the dog and count the barks remembering that it will only register barks every 5 seconds. Remove the unit and look at the bark counter and make sensitivity adjustments accordingly.

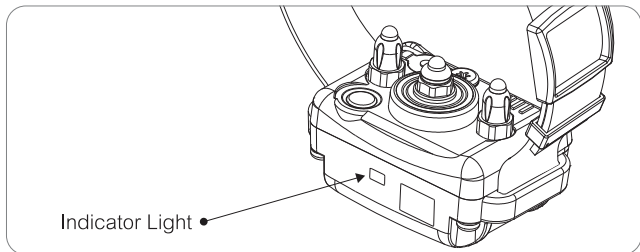
HOW TO SELECT THE CORRECT STIMULATION

The lower the stimulation level the better. Always start with level 1 and increase the level should your dog not respond appropriately. Your dog should not overly vocalize when administered the stimulation. He/she may twist their head as if a bee was buzzing them. Increase one level at time to prevent over stimulating your dog. Some dogs respond to the tone mode after being conditioned with the stimulation. If you are close to your dog you should hear the tone immediately following your dog's bark followed by the corrective stimulation.

More stubborn barkers may need to have the level increased as they become accustomed to the sensation. You are the best judge of the correct level once the dog understands barking is not desired. Don't rush for change in behavior by turning it higher than necessary; remember this behavior has become a habit. It should be significant enough to communicate that barking when the collar is not acceptable.

For larger dogs that have been conditioned to the stimulation, the Auto Mode (L9) may be a good setting if protection barking is desired but nuisance barking is not.

INDICATOR LIGHT

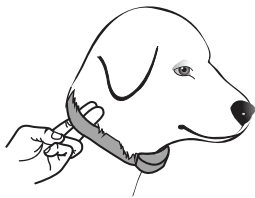


Once the unit is turned on the indicator light will flash green when the battery is charged. It will flash amber when it needs a charge within the next 24 hours and red when charging is required for continued operation. The BP-504 will go into a sleep mode if there is no programming or bark activity. In sleep mode the unit will still detect barks but will not show the battery life, simply pressing the control button will wake up the unit.

CORRECTLY FITTING THE COLLAR

The collar should be adjusted to allow the “contact points” to have direct contact with the skin. You should be able to fit a couple of fingers between the collar strap and your dog. Too tight poses the risk of skin irritation and discomfort. Too loose and the contact points will not be able to administer the stimulation reliably.

The optimal position for the collar receiver is on either side of the dog's windpipe, directly on the windpipes works but may not be as comfortable for your dog. Dogs with thick fur will require some trimming to assure the contact points and bark sensor work properly.



UNDERSTANDING CONTACT POINT SENSITIVITIES

Many dogs have sensitivities to nickel found in stainless steel. Our standard contact points use a low nickel stainless steel which may cause irritation. Look for redness in the contact area which is a sign of sensitivity to the nickel in the contact points. If you are feeding your dog(s) from stainless steel bowls made in China or India please discontinue immediately. Switch to a stainless steel bowls made in Germany of the USA or to a different material such as glass, ceramic or stoneware. Contact us to obtain non nickel contact points known as hypoallergenic contact points; these can be made of a low gloss nickel free stainless steel or titanium.

To prevent the occurrence of skin irritations from pressure from the contact points the BarkLess Collar should never be worn for more than 2 hours per day at first and 10 hours maximum after your dog is conditioned to the contact points. Conditioning typically takes 4 to 8 weeks.

Should your dog experience skin irritations from over exposure to the contact points remove the collar receiver unit immediately and stop using your BarkLess Pro until all skin irritations are totally healed. Applying antibiotic ointment to the sore will aid in the healing process. Dog breeds with thick fur will require trimming the area where the collar box is positioned. In extreme situations we have more pointed thick hair contact points available, please contact customer service or www.ecollar.com for more information on our thick hair contact points.

UNDERSTANDING CONTACT POINT SENSITIVITIES

Important Warnings

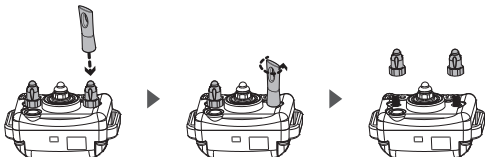
- BarkLess Pro BP-504 is designed for dogs only.
- Always remove the collar when playing with your dog.
- Do not leave the collar on your dog for more than 10 hours per day.
- Do not test the BP-504 on humans or other animals.
- Keep away from children at all times.
- The dog should be healthy during bark reduction training.
- Not recommended for dogs younger than 4 months old.
- Always use the lowest setting that makes a change in your dog's barking behavior.
- Seek professional help if your dog becomes aggressive during bark reduction training.
- Observe your dog's reaction to the stimulation before leaving them alone.

HOW TO CHANGE THE CONTACT POINTS

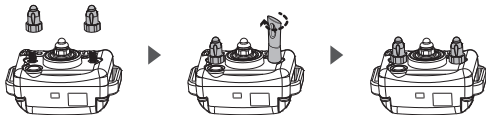
The standard 5/8" contact points are okay for most dogs.

Longer furs require the longer 3/4" contact points. Replace the 5/8" contact points by following the instructions below using the enclosed contact point tool.

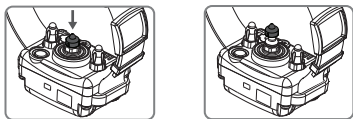
1. Loosen both contact points by rotating the contact point using the enclosed contact point tool.



2. Install the 3/4" contact points onto the bolt and tighten the contact clockwise using the contact point tool.



3. Snap on the sensor post cap to make sensor's tip level with longer contact points :



ONE YEAR WARRANTY

All parts and labor are covered 100% including the rechargeable batteries for a period of one year from the date of the original purchase. The warranty does not cover chewed or damaged product from misuse or neglect. The warrantor has the option to repair or replace the defective product during the one year warranty period. Should you require service to your product, please contact us by phone at 1-855-326-5527 or by email at sales@ecollar.com to discuss the procedure for returning the defective product. Your complete satisfaction is our goal.

SOCIAL MEDIA RESOURCES

Please like and subscribe to our Facebook page to stay up with new innovations.

Please subscribe to our youtube channel to watch videos on how to use your BP-504.

Search E-Collar Technologies to find us on the internet.



E-Collar Technologies, Inc.

2120 Forrest Park Drive
Garrett, IN 46738-1887

1-260-357-0051 (US & International)

1-855-326-5527 (US Toll Free)

1-855-226-5527 (US Toll Free Fax)

sales@ecollar.com
www.ecollar.com

© 2015 E-Collar Technologies, Inc.



Thank you for Supporting American Workers